
Unit 7 Warm-ups

Fall 2016

Anthropology & Odontology

Unit 7 Day 1

Q1: Give an example of when an anthropologist may be called in to an investigation.

Q2: How do anthropology and odontology differ? Give two differences.

Unit 7 Day 2

Q1: Explain the difference between yellow marrow and red marrow in terms of where they are located and what they do in the body.

Q2: Explain why stress helps to increase the strength of a bone.

Unit 7 Day 3

**Q1: Classifying the following bones:
sternum and mandible**

**Q2: How does an osteoclast differ from
an osteoblast?**

Unit 7 Day 4

Q1: Calculate the height of an African American male in feet and inches with a femur that is 52 cm long.

Q2: A caucasian female is 5' 4". Determine the length of her ulna.

Unit 7 Day 5

Q1: Name three ways in which gender can be determined using a pelvic bone.

Q2: An individual skull is found to have square orbits, and a protruding mastoid process. What is the sex of the individual?

Unit 7 Day 6

Q1: Draw a stick figure that represents a body that exhibits the following ossifications: ankles, elbow, thigh

Q2: Approximately what age is this individual?

Unit 7 Day 7

Q1: Identify the type of fracture & for whom it is most common:



Q2: What does a broken hyoid bone indicate?

Unit 7 Day 8

Q1: Draw and label the parts of a long bone. Include: *red marrow, yellow marrow, spongy bone, compact bone, epiphysis and diaphysis*

Q2: Identify the bone:

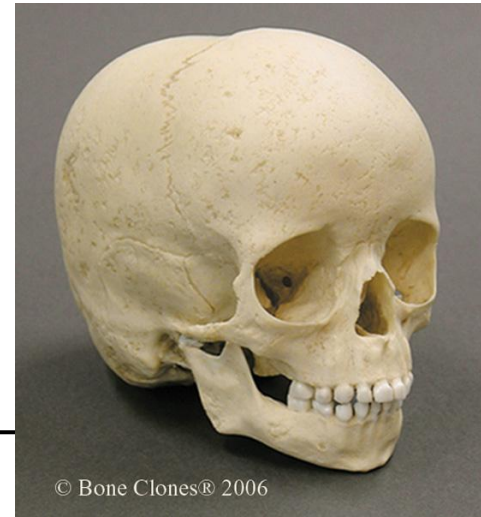


Unit 7 Day 9

Q1: Identify the following as human or nonhuman and explain why:



Q2: Identify as adult or juvenile skull:



Unit 7 Day 10

Q1: What is the dentition for an 12 year old?

Q2: What is the dentition for a 6 year old?

Unit 7 Day 11

Turn in Warm-ups, Study Guide & Lab Notebook for grading
